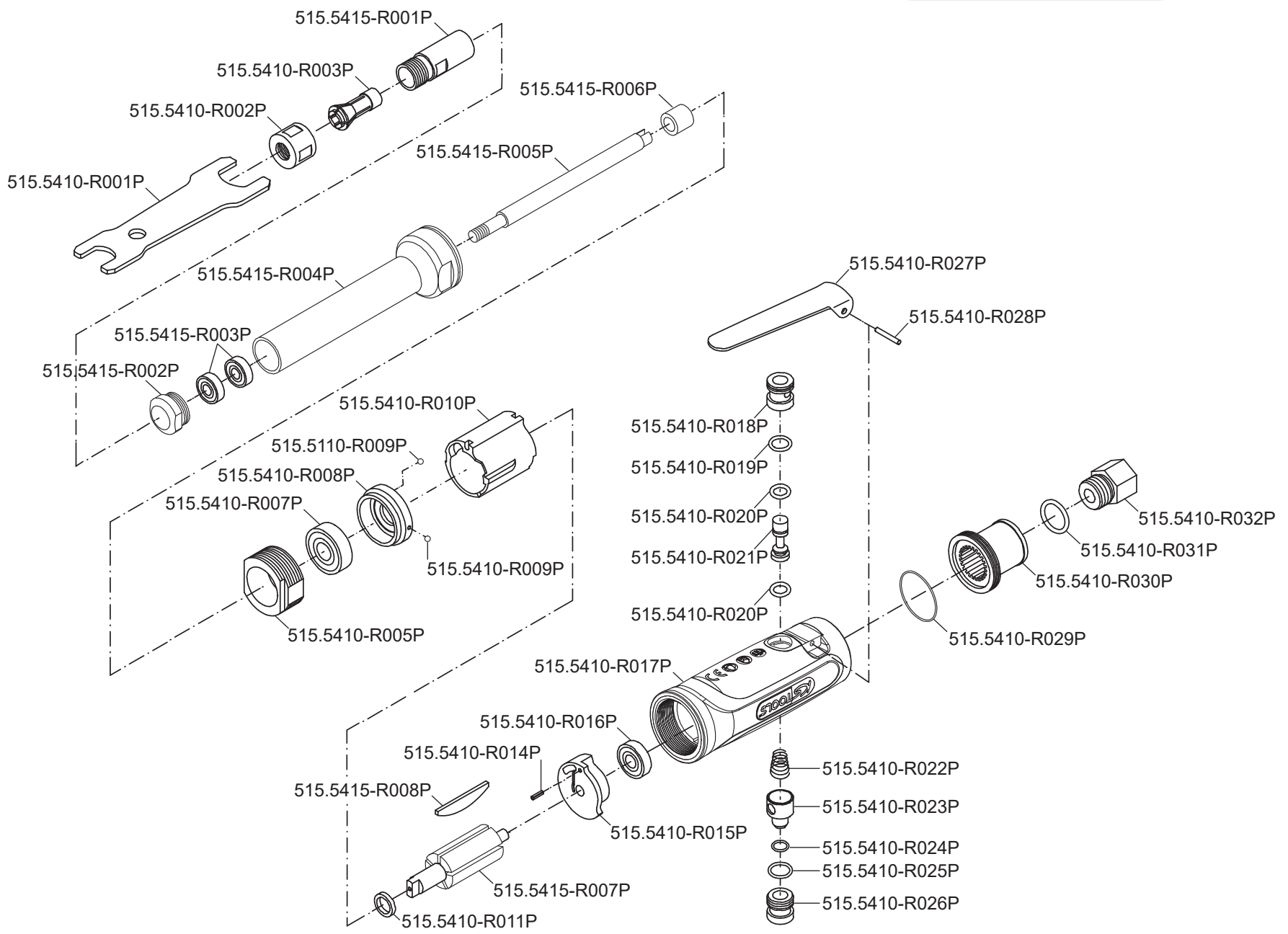


Art. 515.5415



**Art. 515.5415**

Art.-Nr.	Description	Beschreibung	Menge Qty.
515.5410-R001P	Double end spanner	Spannschlüssel	2
515.5410-R002P	Collet nut	Klemmhülsenmutter	1
515.5410-R003P	Collet	Klemmhülse	1
515.5410-R005P	Lock nut	Sicherungsmutter	1
515.5410-R007P	Ball bearing	Kugellager	1
515.5410-R008P	Front end plate	Vordere Verschlussplatte	1
515.5410-R009P	Steel ball	Stahlkugel	2
515.5410-R010P	Cylinder	Zylinder	1
515.5410-R011P	Rotor collar	Rotor Gewinding	1
515.5410-R014P	Spring pin	Splint	1
515.5410-R015P	Rear end plate	Hintere Kugellageraufnahme	1
515.5410-R016P	Ball bearing	Kugellager	1
515.5410-R017P	Motor housing	Antriebsgehäuse	1
515.5410-R018P	Throttle valve bushing	Drosselventil Buchse	1
515.5410-R019P	O-ring	O-Ring	1
515.5410-R020P	O-ring	O-Ring	2
515.5410-R021P	Throttle valve	Drosselventil	1
515.5410-R022P	Throttle valve spring	Drosselventilfeder	1

Art.-Nr.	Description	Beschreibung	Menge Qty.
515.5410-R023P	Air regulator	Druckluftregulierung	1
515.5410-R024P	O-ring	O-Ring	1
515.5410-R025P	O-ring	O-Ring	1
515.5410-R026P	Valve screw	Ventilschraube	1
515.5410-R027P	Throttle lever	Betätigungshebel	1
515.5410-R028P	Throttle lever pin	Betätigungshebelsplint	1
515.5410-R029P	O-ring	O-Ring	1
515.5410-R030P	Exhaust deflector	Abluftdeflektor	1
515.5410-R031P	O-ring	O-Ring	1
515.5410-R032P	Air inlet	Lufteinlassschraube	1
515.5415-R001P	Spindle	Spindel	1
515.5415-R002P	Housing cap	Gehäusedeckel	1
515.5415-R003P	Ball bearing	Kugellager	2
515.5415-R004P	Spindle housing	Spindelgehäuse	1
515.5415-R005P	Shaft	Arbeitsspindel	1
515.5415-R006P	Collar	Verschlussring	1
515.5415-R007P	Rotor	Rotor	1
515.5415-R008P	Rotor blade	Rotorblatt	4